



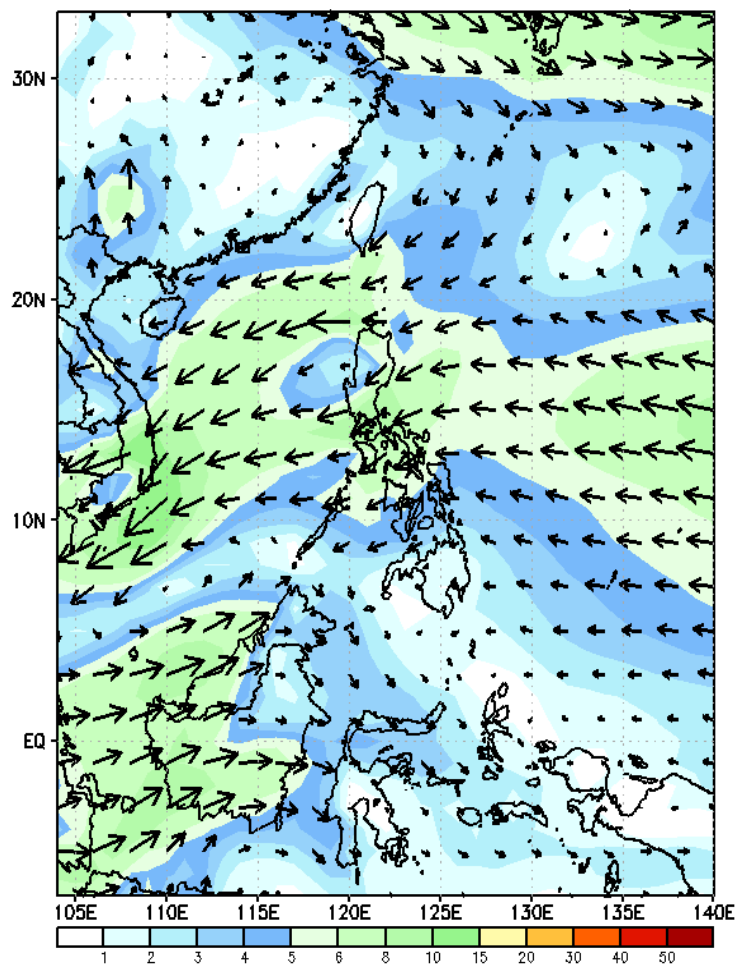
Week 1 & Week 2 Forecast for the Philippines using GEFS Model



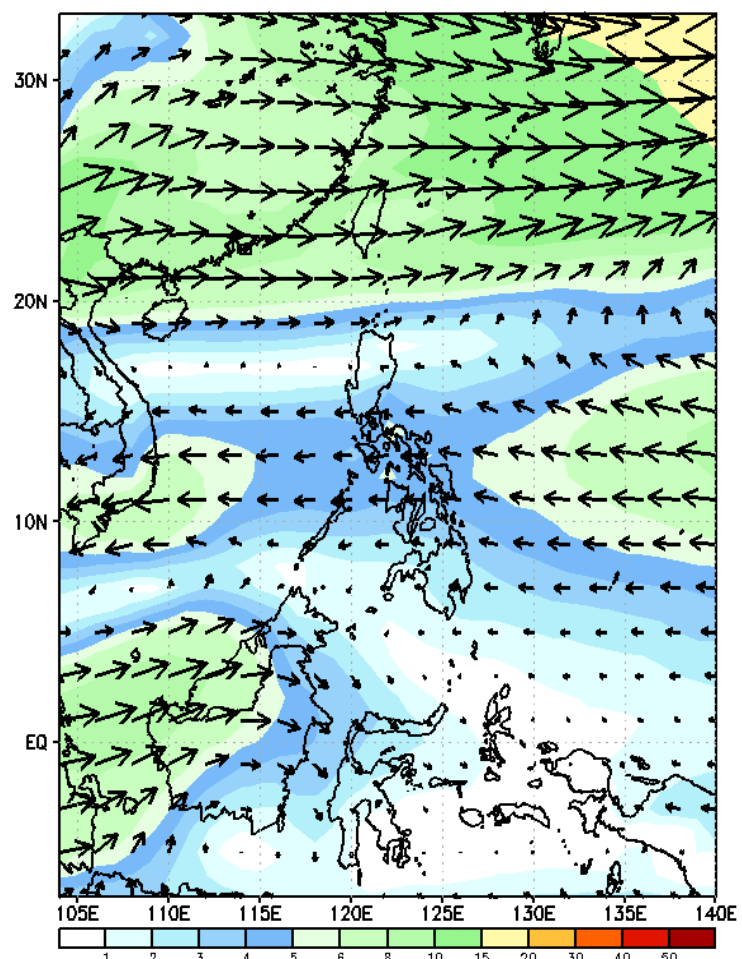
GEFS Week-1 Wind Forecasts:

Week 1: Nov 29- Dec 05, 2024

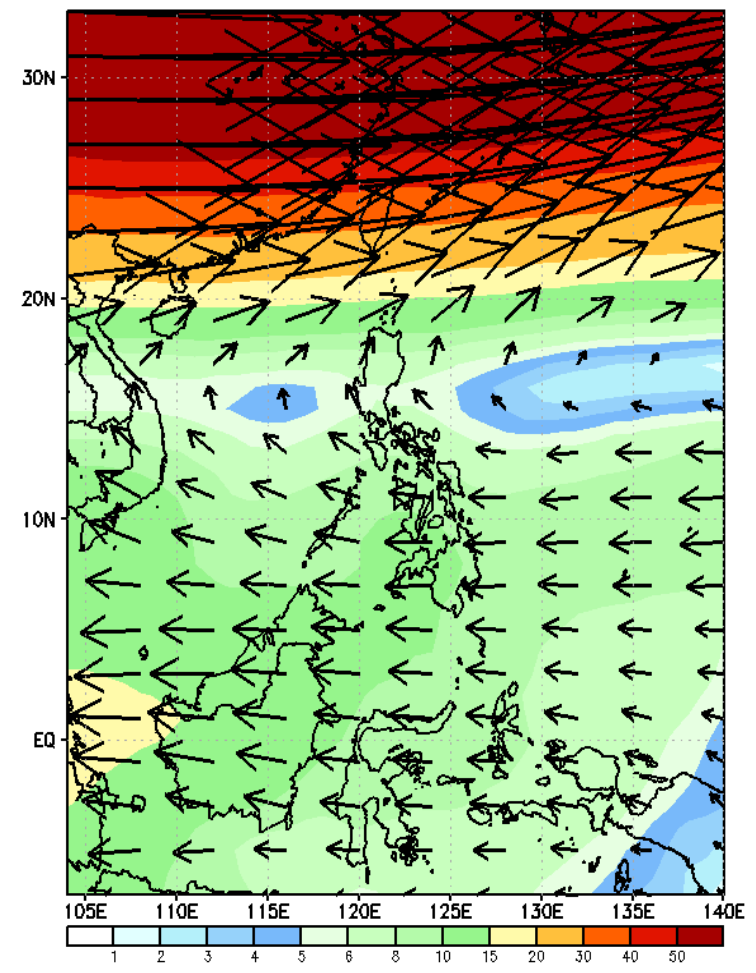
GEFS Week-1 850-hPa Wind Total
Valid: 20241129 - 20241205



GEFS Week-1 700-hPa Wind Total
Valid: 20241129 - 20241205

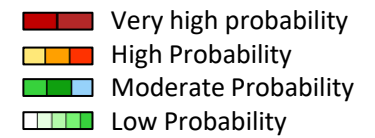


GEFS Week-1 200-hPa Wind Total
Valid: 20241129 - 20241205



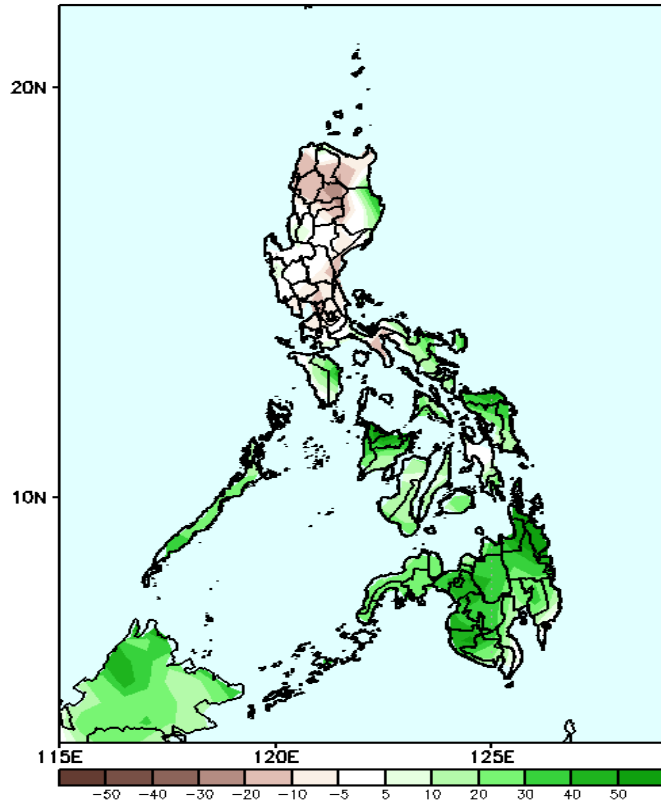
Northeast Monsoon affecting Extreme Northern Luzon, Easterlies will likely affect the rest of the country during the forecast period

Precipitation Anomaly and Exceedance Probability > 25/50 mm



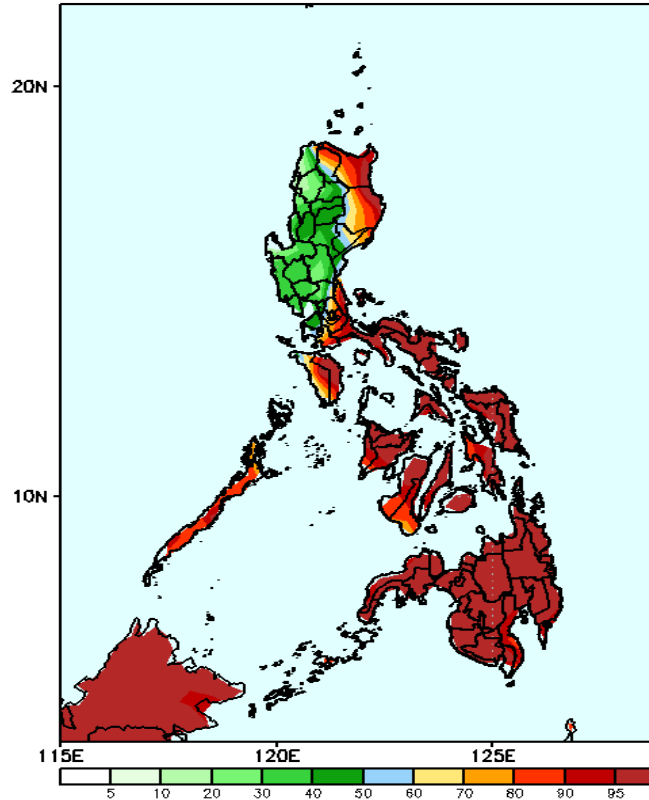
Week 1: Nov 29- Dec 05, 2024

GEFS Week-1 Precip Anomaly
Valid: 20241129 - 20241205



Increase of rainfall of 10-60mm is most likely in eastern part of Isabela, Mindoro, Palawan, Bicol region and most parts of Visayas and Mindanao while 10-30mm rainfall deficit is expected for the rest of Luzon.

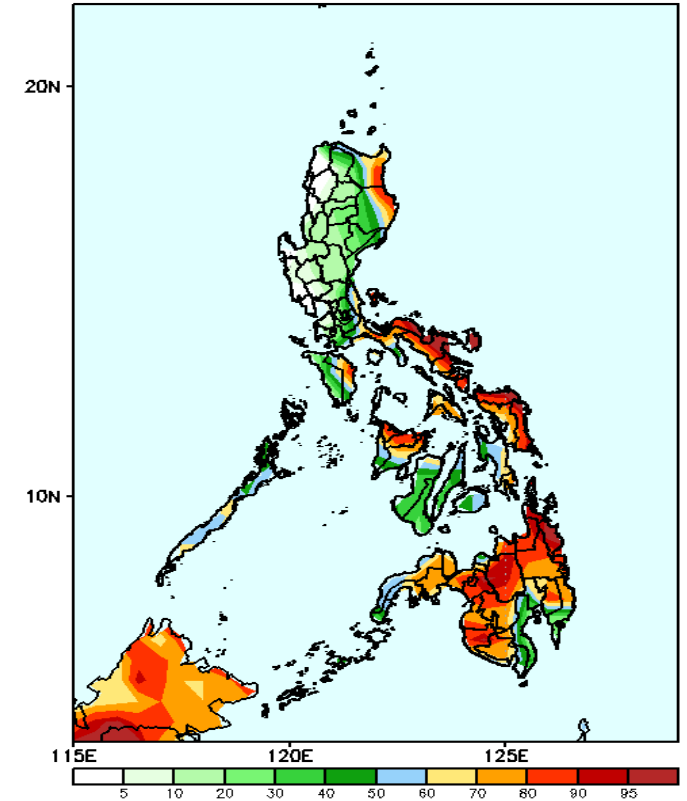
GEFS Week-1 Exceedance Prob. > 25mm
Valid: 20241129 - 20241205



Probability to Exceed 25mm

- High to very high over Apayao, Cagayan, Isabela, Aurora, Palawan, CALABARZON, Bicol Region, most parts of Visayas and Mindanao;
- Moderate to high over the rest of Luzon.

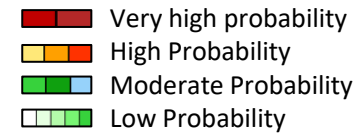
GEFS Week-1 Exceedance Prob. > 50mm
Valid: 20241129 - 20241205



Probability to Exceed 50mm

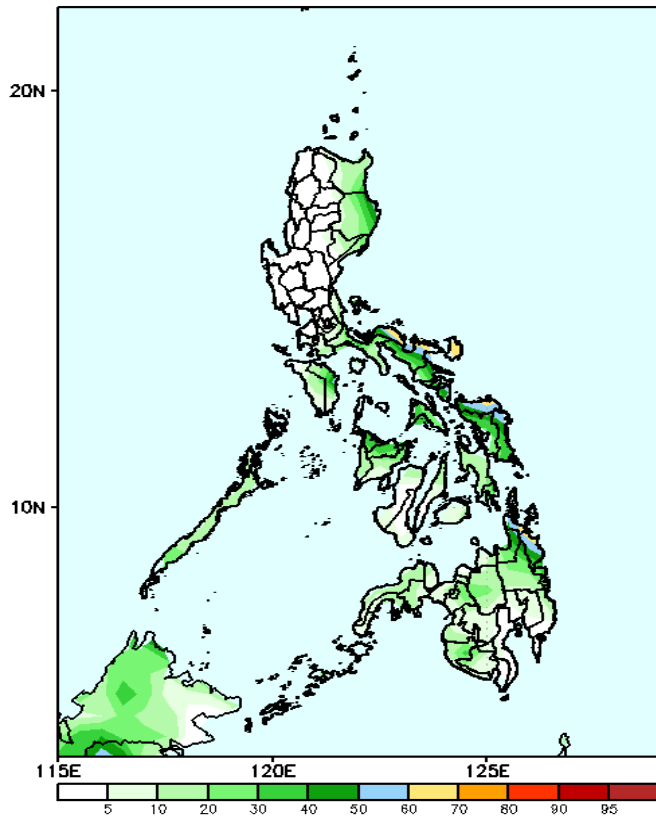
- High to very high over Batanes, Bicol Region, Aklan, Capiz, Samar Provinces, Bukidnon, Lanao Provinces, Sultan Kudarat and Surigao Provinces;
- Moderate to high over Cagayan, Isabela, Quezon, most parts of MIMAROPA, the rest of Panay, northern part of Negros Occidental, Leyte Provinces and the rest of Mindanao;
- Low to moderate over Aurora and the rest of Southern Luzon and Visayas;
- Low over the rest of Luzon.

Exceedance Probability > 100/150/200 mm

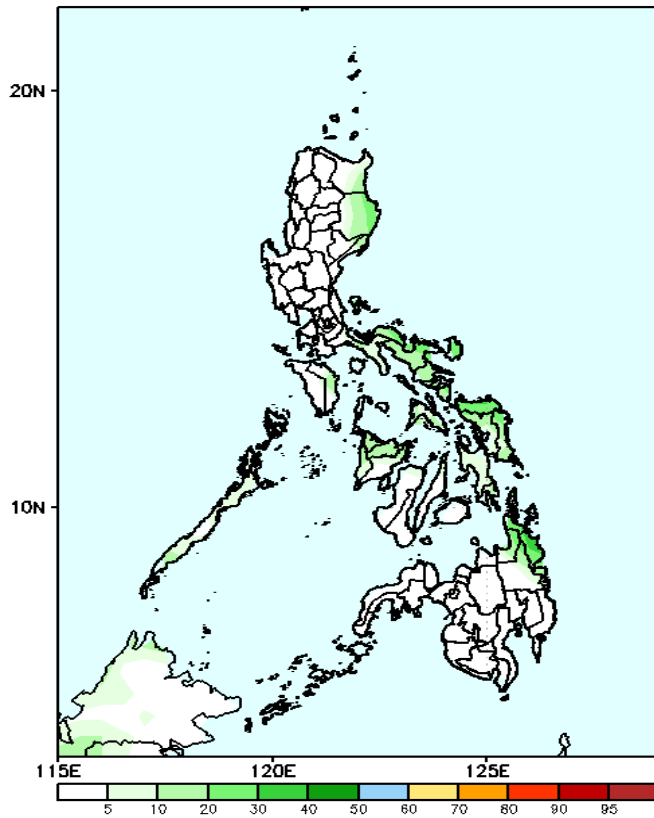


Week 1: Nov 29- Dec 05, 2024

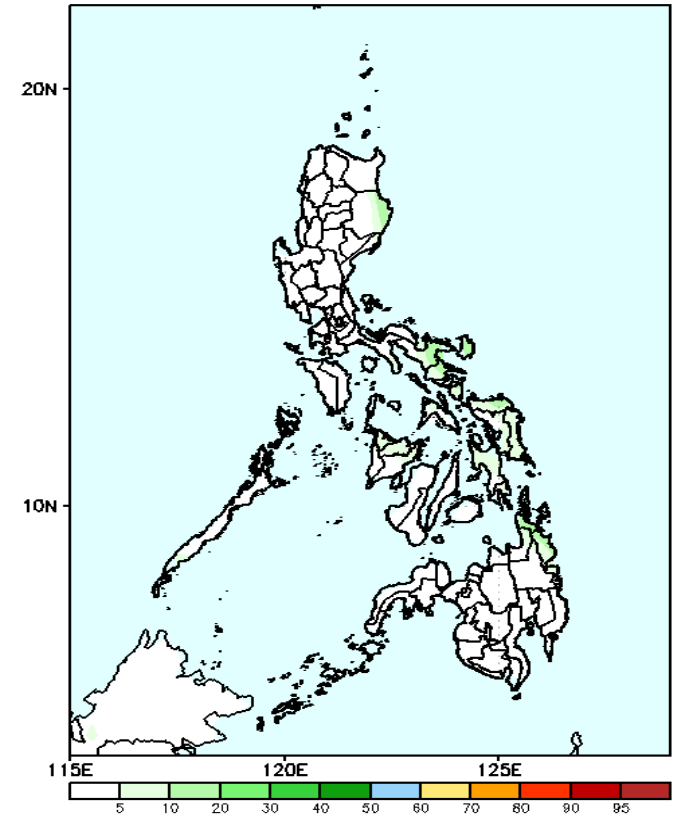
GEFS Week-1 Exceedance Prob. > 100mm
Valid: 20241129 - 20241205



GEFS Week-1 Exceedance Prob. > 150mm
Valid: 20241129 - 20241205



GEFS Week-1 Exceedance Prob. > 200mm
Valid: 20241129 - 20241205



Probability to Exceed 100mm

- Moderate to high over the eastern section of Bicol Region, Northern Samar and Surigao Provinces;
- Low to moderate the rest of Bicol Region, and Eastern Visayas;
- Low over the rest of the country.

Probability to Exceed 150mm

- Low across the country.

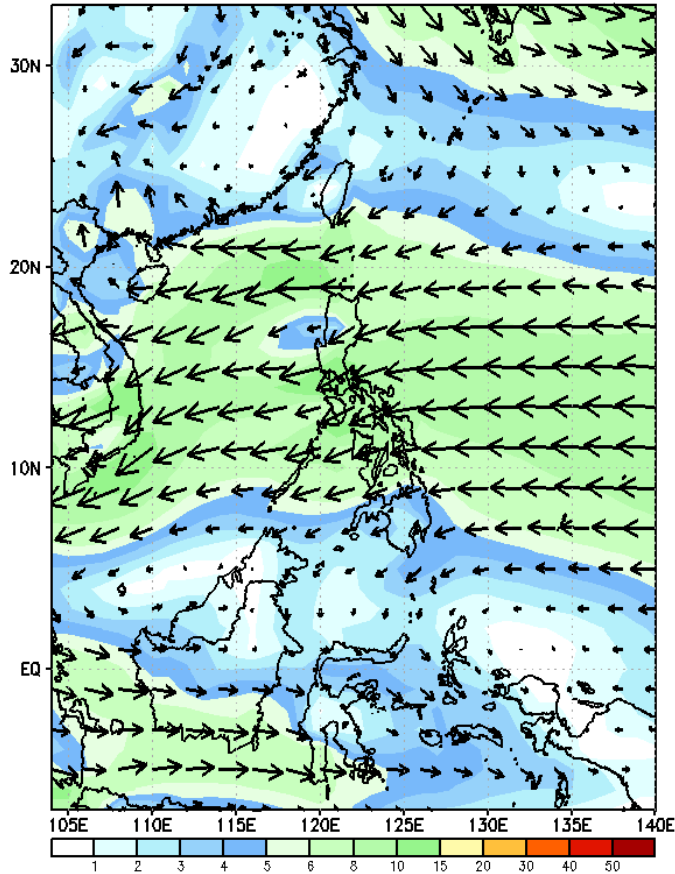
Probability to Exceed 200mm

- Low across the country.

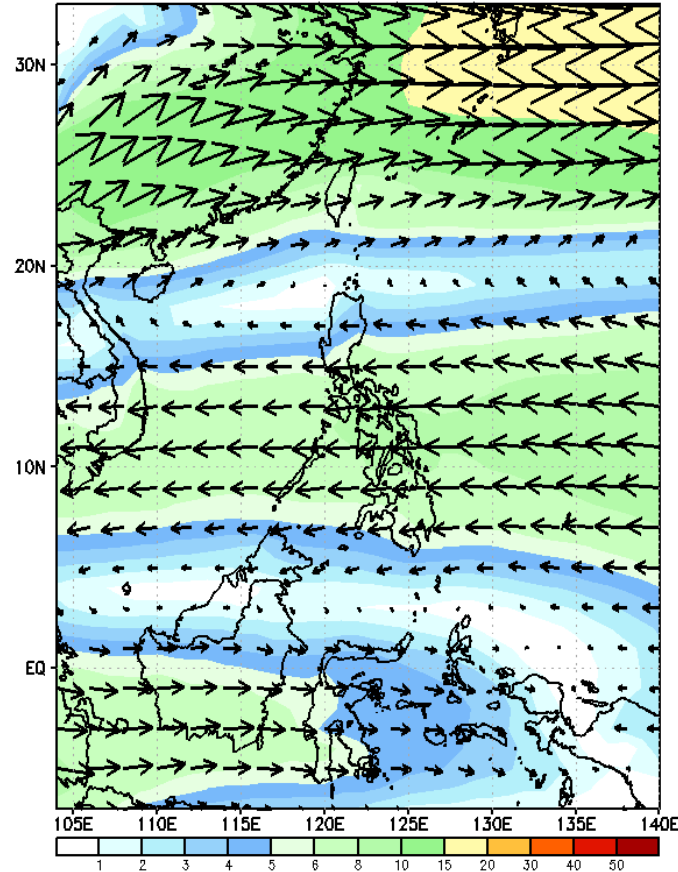
GEFS Week-2 Wind Forecasts:

Week 2: Dec 06-12, 2024

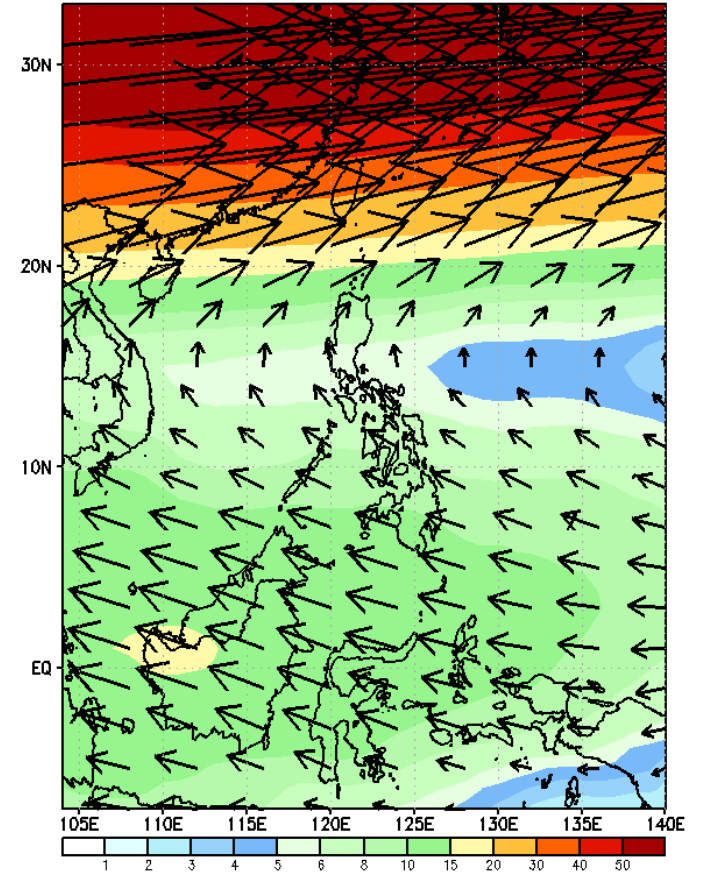
GEFS Week-2 850-hPa Wind Total
Valid: 20241206 - 20241212



GEFS Week-2 700-hPa Wind Total
Valid: 20241206 - 20241212

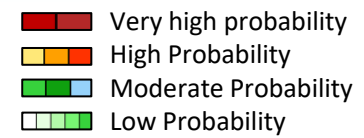


GEFS Week-2 200-hPa Wind Total
Valid: 20241206 - 20241212



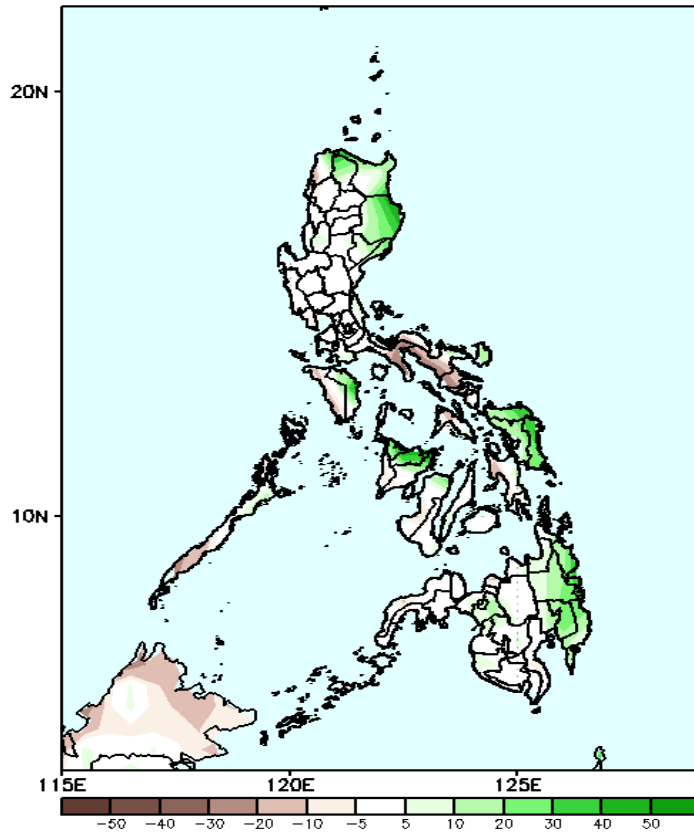
Easterlies will likely affect most parts of the country during the forecast period

Precipitation Anomaly and Exceedance Probability > 25/50 mm



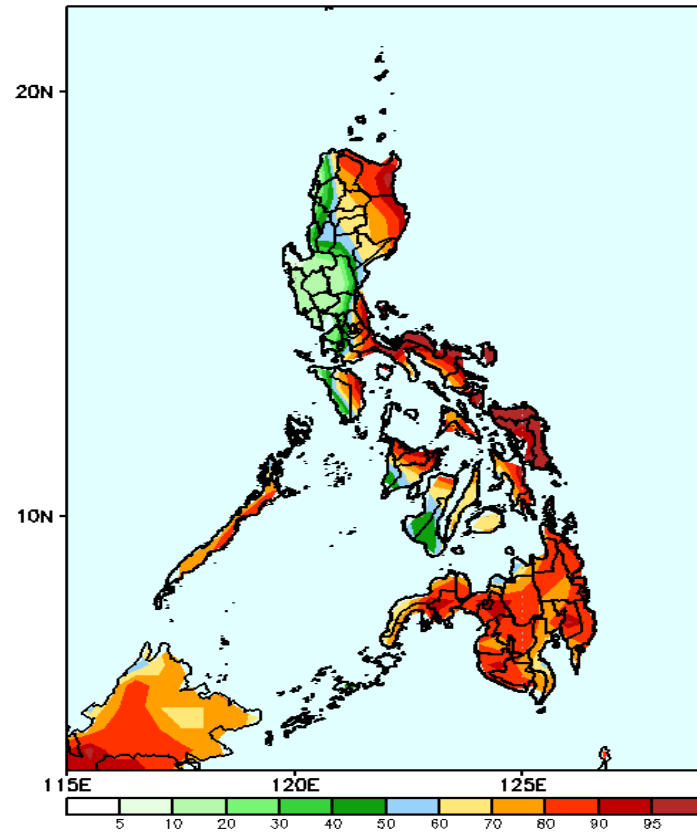
Week 2: Dec 06-12, 2024

GEFS Week-2 Precip Anomaly
Valid: 20241206 - 20241212



Increase of Rainfall of 20-40mm is most likely in Apayao, Cagayan, Isabela, Sorsogon, Aurora, Or. Mindoro, Aklan, Capiz, Sorsogon, Eastern Visayas and eastern Mindanao while 10-30mm increase of Rainfall is expected in Palawan and Bicol Region.

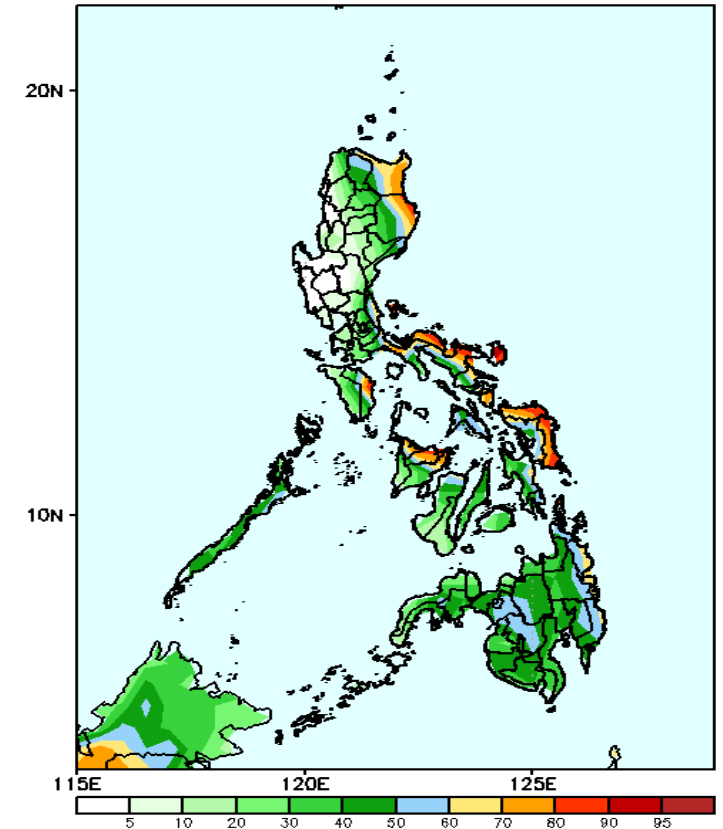
GEFS Week-2 Exceedance Prob. > 25mm
Valid: 20241206 - 20241212



Probability to Exceed 25mm

- High to very high over Apayao, Cagayan, Isabela, , CAR, Aurora, Palawan, Or. Mindoro, CALABARZON, Bicol Region, most parts of Visayas and Mindanao;
- Moderate to high over the rest of Luzon, western Panay and Negros Island.

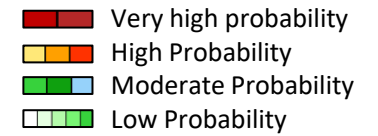
GEFS Week-2 Exceedance Prob. > 50mm
Valid: 20241206 - 20241212



Probability to Exceed 50mm

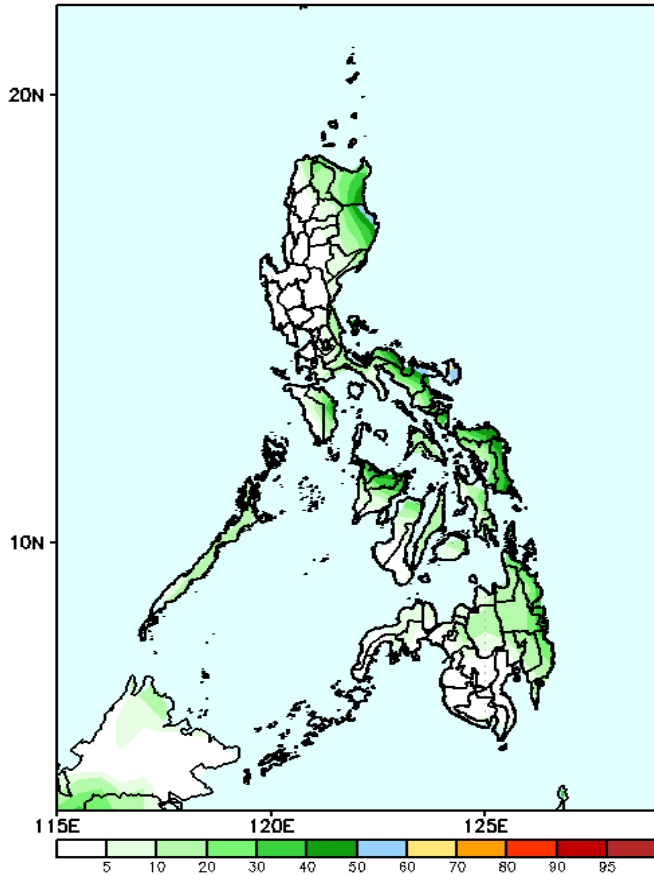
- Moderate to high over most of Eastern Luzon, Oriental Mindoro, northern portion of Panay and NIR, most of Eastern Visayas and Eastern Mindanao;
- Low to moderate Palawan, Cebu and the rest of Mindanao;
- Low over the rest of the country.

Exceedance Probability > 100/150/200 mm



Week 2: Dec 06-12, 2024

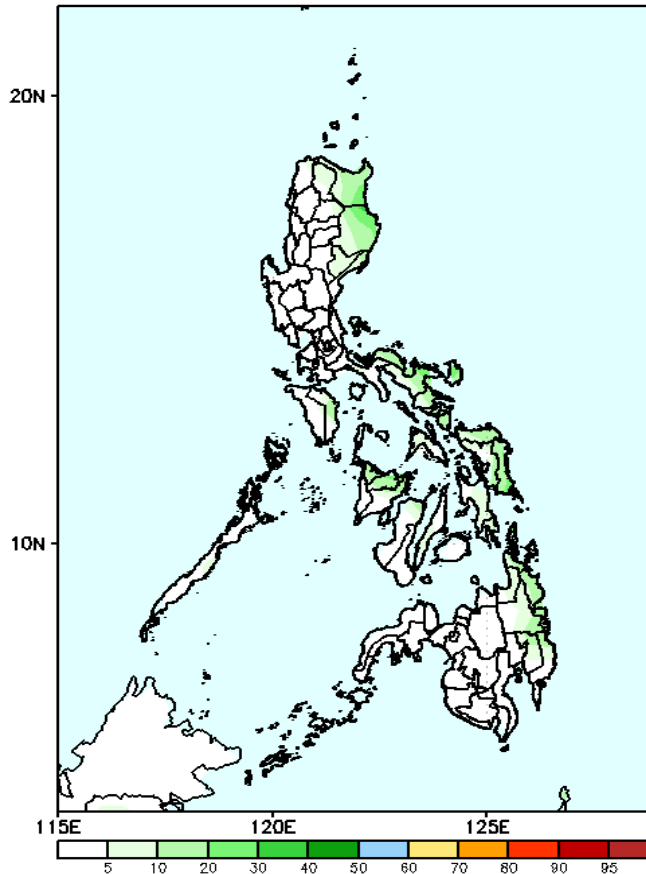
GEFS Week-2 Exceedance Prob. > 100mm
Valid: 20241206 - 20241212



Probability to Exceed 100mm

- Moderate to high over the northern part of Camarines Sur and Catanduanes;
- Low to moderate over the rest of Eastern Luzon and Visayas;
- Low over the rest of the country.

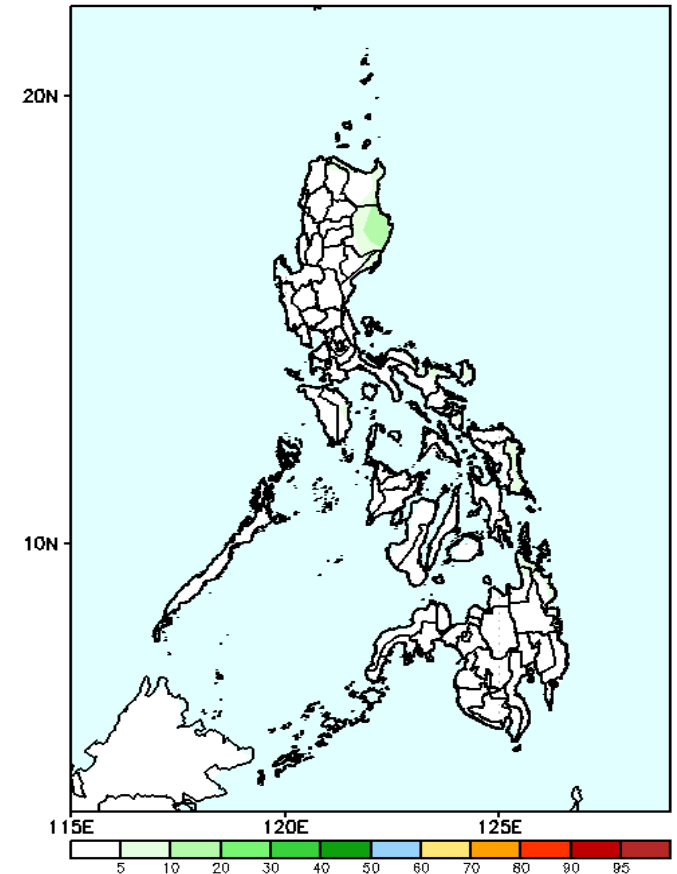
GEFS Week-2 Exceedance Prob. > 150mm
Valid: 20241206 - 20241212



Probability to Exceed 150mm

- Low across the country.

GEFS Week-2 Exceedance Prob. > 200mm
Valid: 20241206 - 20241212

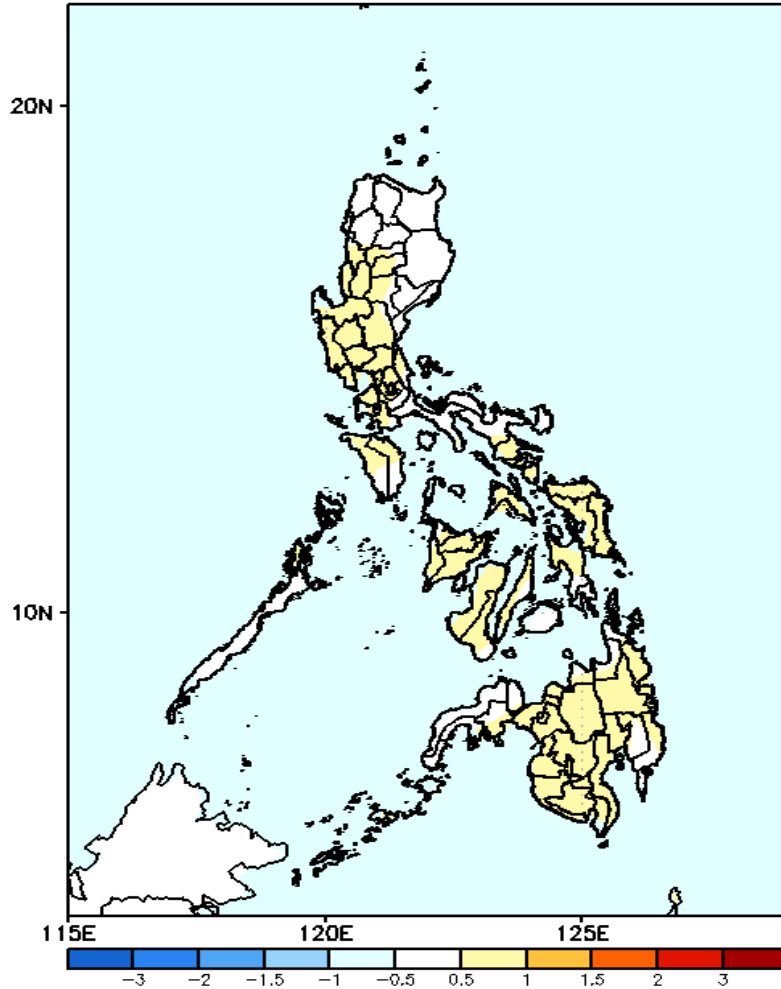


Probability to Exceed 200mm

- Low across the country.

GEFS Week-1 & 2 Forecasts: T2m Anomaly

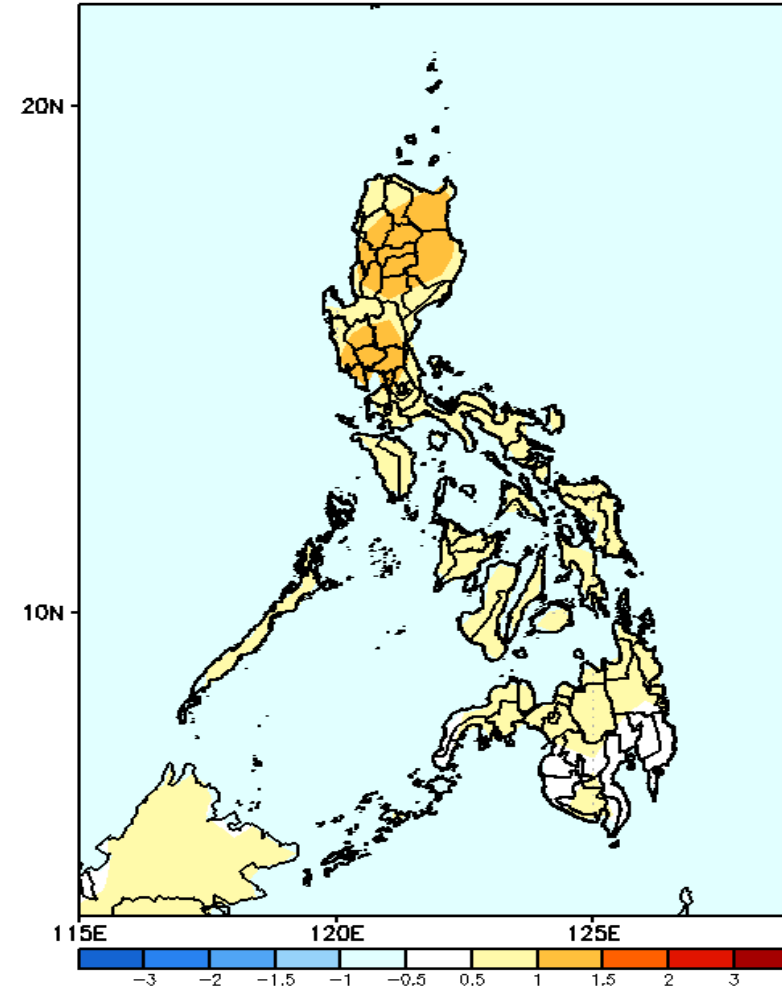
GEFS Week-1 T2m Anomaly
Valid: 20241129 - 20241205



2m Temperature Week 1: Nov 29- Dec 05, 2024

Near to slightly warmer than average surface air temperature will likely be experienced in most parts of the country.

GEFS Week-2 T2m Anomaly
Valid: 20241206 - 20241212



2m Temperature Week 2: Dec 06-12, 2024

Slightly warmer to warmer than average surface air temperature will likely be experienced in most parts of the country.

